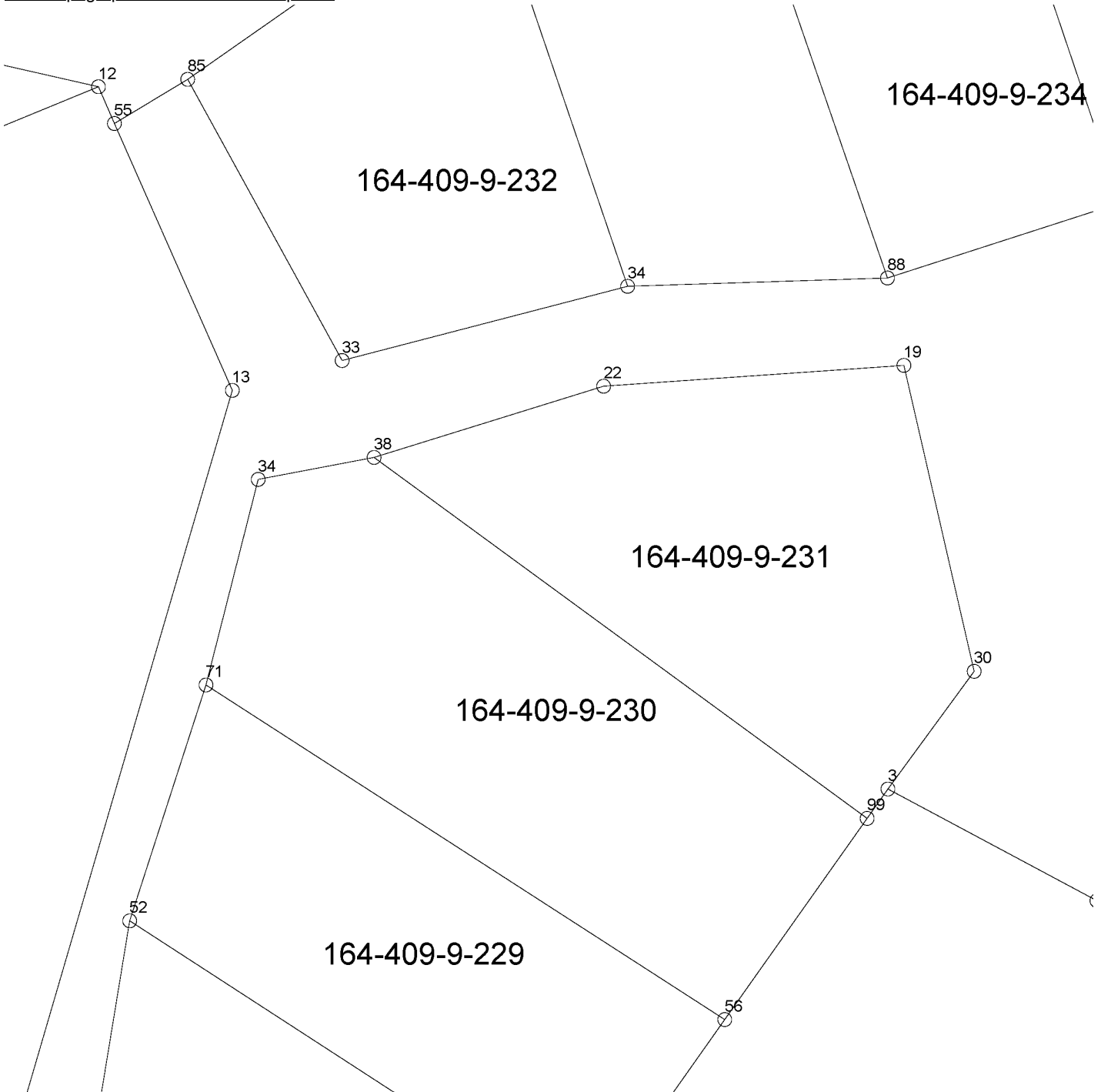


Cadastral index map

The location of the real property unit is shown on the cadastral index map. On the map, there are property and other register unit boundaries, boundary markers and property identifiers.

The Land Information System of Finland contains attribute data related to property. Further information (in Finnish): <http://www.maanmittauslaitos.fi/kiinteistot/asiantunnevalle-kayttajalle/kiinteistotiedot-ja-niiden-hankinta>

The product belongs to the open data of the National Land Survey of Finland. More information: Topographic data and how to acquire it: <http://www.maanmittauslaitos.fi/en/maps-and-spatial-data/expert-users/topographic-data-and-how-acquire-it>



Purpose:

Data in the Cadastral index map is needed for instance in connection with property transactions and acquisition of building permits, and when clarifying own or others' rights of passage or property boundaries, boundary markers and property identifiers.

Geographic location

Entire Finland

Responsible party

National Land Survey of Finland

Scale
5000
Spatial representation
Vector
Spatial representation info
Full planar graph
Data content

GML schema of Cadastral index map in vector format <http://xml.nls.fi/KTJ/Kiinteistorekisterikartta/2014-08/Kiinteistorekisterikartta.xsd>.

GML schema description <http://xml.nls.fi/KTJ/Kiinteistorekisterikartta/Asiakasdokumentaatio/gml/index.html>.

ESRI shape format description of Cadastral index map (in Finnish) http://www.maanmittauslaitos.fi/sites/maanmittauslaitos.fi/files/attachments/2017/05/Kiinteist%C3%B6rekisterikartta_shape.pdf

MapInfo mif format description of Cadastral index map (in Finnish) http://www.maanmittauslaitos.fi/sites/maanmittauslaitos.fi/files/attachments/2017/05/Kiinteist%C3%B6rekisterikartta_mif_mid.pdf

Maintenance

Updating frequency. Vector: continuous, Raster: weekly

▼ Quality information

Lineage

Property boundaries are marked with boundary markers in the terrain when forming a property. Boundary markers indicate the boundary lines of a property. A boundary can also be a natural terrain formation, such as a shore, drainage ditch or road. In sparsely populated areas, boundary markers have been defined with an accuracy of approx. 20 cm by GPS measurement since 2005. Coordinates of earlier boundary markers have been defined either by image measurement from aerial photographs or by digitalisation from maps. The accuracy of these boundary markers varies in general between 50 cm and 4 m, over 4 m in some cases. The accuracy of a boundary marker is indicated by its RSK value.

In population centres, the Cadastral index map is mainly based on the municipality's large scale base map material in the plans, the property data of which has been updated.

There can be inaccuracies in the location data of the Cadastral index map, because there are no exact coordinates for all boundary markers. The area of a register unit is shown in more detail in the cadastral survey documents (available in the archives of the keeper of the cadastral registry) and the terrain than on the Cadastral index map.

More information, report on positional accuracy of boundary markers in the Cadastral index map (in Finnish) http://www.maanmittauslaitos.fi/sites/maanmittauslaitos.fi/files/old/Nro_112_Kiinteistorekisterikartan_rajamerkkien_sijaintitarkkuus.pdf

Conformity

COMMISSION REGULATION (EU) No 1089/2010 of 23 November 2010 implementing Directive 2007/2/EC of the European Parliament and of the Council as regards interoperability of spatial data sets and services.

2010-12-08

The product does not meet the specifications.

[Close](#)

► Distribution and further information

► Pricing