

---

# **eQuercus v1.20**

**Website and content management**

## **Installation Manual**

# Contents

<b>1</b>	<b>Installation .....</b>	<b>3</b>
1.1	Folder structure .....	3
1.1.1	Files in the <i>Home Directory</i> .....	3
1.1.2	Admin folder.....	3
1.1.3	_db folder.....	3
1.1.4	Images folder .....	4
1.1.5	Library folder.....	4
1.1.6	Stylesheet folder .....	4
<b>2</b>	<b>Configurations .....</b>	<b>5</b>
2.1	Global.asa file.....	5
2.2	File style.css .....	6
<b>3</b>	<b>Access to the admin folder.....</b>	<b>7</b>
<b>4</b>	<b>Minimum requirements.....</b>	<b>8</b>
4.1	Server .....	8
4.2	Management client .....	8
<b>5</b>	<b>How to add a new content type .....</b>	<b>9</b>
5.1	Database .....	9
5.1.1	Creating a new table .....	9
5.1.2	Creating new relations .....	10
5.1.3	Editing the Content_Type.....	11
5.2	Adding new ASP pages for managing content .....	11
5.3	Adding and editing files for eQuercus Library.....	12
5.3.1	Creating a new file containing the object related to the new content type.....	12
5.3.2	Editing the equercus.inc file .....	12
5.4	Display page association .....	12

## CHAPTER 1

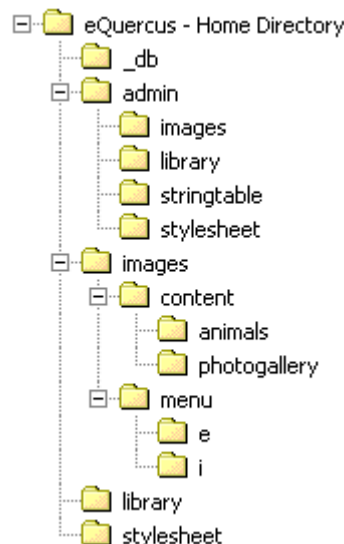
# Installation

This chapter describes the procedure for installing eQuercus on a Microsoft Internet Information Server (IIS).

All the files necessary for eQuercus are contained in the eQuercus.zip repository.

- a) Uncompress the eQuercus.zip repository in a temporary folder.
- b) You will find three main folders in the temporary folder:
  - eQuercus: folder containing product files;
  - Documents: folder containing product manuals;
  - Template: folder containing templates for the product (not included in the Demo version).
- c) Copy the contents of the eQuercus folder in your site's *Home Directory*.

The *Home Directory* structure should be as shown below:



## 1.1 Folder structure

This paragraph describes the contents of the folders installed in your site's *Home Directory*.

### 1.1.1 Files in the *Home Directory*

The files in *Home Directory* are for a simple demo site ("eQuercus ZOO").

Except for the global.asa file, these files must be replaced with the pages of your site.

#### **Important**

All the pages of your site **must** be in this folder.

### 1.1.2 Admin folder

The admin folder contains all the "eQuercus - Website and content management" product folders and files.

### 1.1.3 \_db folder

The \_db folder contains two Microsoft Access 2000 databases:

- eQuercus.mdb contains the data for the “eQuercus ZOO” demo site.
- EMPTY\_eQuercus.mdb is a database with no contents which must be renamed eQuercus.mdb in order to be used as the database for your site.

### 1.1.4 Images folder

The images folder contains the images of your site.

Two folders have been created to simplify image management: one for menus and one for contents. This structure can be modified based on your requirements (see the Configurations chapter, global.asa file section)

It is necessary to assign write permission to be able to directly upload images from eQuercus.

#### **Note**

The current images are used by the “eQuercus ZOO” demo site.

### 1.1.5 Library folder

The library folder contains the “eQuercus - Library” product files.

### 1.1.6 Stylesheet folder

The style.css file in this folder should contain the styles used on your site.

The name of the file should not be changed because the module for managing HTML type contents uses this file.

# Configurations

This chapter describes the changes to be made to eQuercus files to make the site operational. Only two files need to be changed: `global.asa` and `style.css`.

## 2.1 Global.asa file

This file is located in the site's *Home Directory* and contains all parameters needed for executing eQuercus.

The following parameters need to be set:

- **var HomeDirectoryPath = "/"**  
This parameter needs to be changed if the site administered by eQuercus is in a *virtual directory* or a *sub-domain* of the main site.  
Example: if your site is at the address `www.yourdomain.com/your_virtual_dir/` set the value to `"/your_virtual_dir/"`.
- **var EQuercusApplicationPath = "admin/"**  
This is the path related to the *Home Directory* of the folder containing the “eQuercus - Website and content management” product files.  
If necessary replace the `"admin/"` value with the path for *Home Directory* of the folder containing the eQuercus files.
- **var DbPath = "\_db/"**  
This is the path related to the *Home Directory* of the folder containing the `eQuercus.mdb` database.  
If necessary replace the `"_db/"` value with the path for *Home Directory* of the folder containing the databases.
- **var MenuImagesPath = "images/menu/"**  
Specifies the path related to the *Home Directory* of the folder containing the site graphic menu images.
- **var ContentImagesPath = "images/content/"**  
Specifies the path related to the *Home Directory* of the folder containing the site images.
- If the database is in a site subfolder (recommended):
  - (a) remove the comments from the lines of the section “*Connection to Microsoft Access DB through OLEDB*”:
 

```
var UseSQLServer = false
var UseOLEDB = true
var AdoConnection = "Provider=Microsoft.Jet.OLEDB.4.0..."
```
  - (b) comment the lines of the sections “*Connection to Microsoft Access DB through DSN*” and “*Connection to Microsoft SQL Server*”:
 

```
var UseSQLServer = false
var UseOLEDB = false
var AdoConnection = "DSN=YOUR_DSN;UID=Admin;PWD=;"
...
var AdoConnection = "Provider=SQLOLEDB.1;Initial Catalog=..."
```
- If a DSN is used to connect to the database:
  - (a) remove the comments from the lines of the section “*Connection to Microsoft Access DB through DSN*”:
 

```
var UseSQLServer = false
var UseOLEDB = false
var AdoConnection = "DSN=YOUR_DSN;UID=Admin;PWD=;"
```

replace YOUR\_DSN with the name of the eQuercus.mdb. database DSN.

(b) comment the lines of the sections “*Connection to Microsoft Access DB through OLEDB*” and “*Connection to Microsoft SQL Server*”:

```
var UseSQLServer = false
var UseOLEDB = true
var AdoConnection = "Provider=Microsoft.Jet.OLEDB.4.0...
...
var AdoConnection = "Provider=SQLOLEDB.1;Initial Catalog=...
```

- If Microsoft SQL Server is used:

(a) remove the comments from the lines of the section “*Connection to Microsoft SQL Server*”:

```
var UseSQLServer = true
var UseOLEDB = false
var AdoConnection = "Provider=SQLOLEDB.1;Initial Catalog=...
```

replace YOUR\_DATABASE with the name of the database and YOUR\_SQL\_SERVER with the name of the SQL Server. Import the database eQuercus.mdb in SQL Server and remember to index the fields of the tables (see the structure of the database eQuercus.mdb).

(b) comment the lines of the sections “*Connection to Microsoft Access DB through OLEDB*” and “*Connection to Microsoft Access DB through DSN*”:

```
var UseSQLServer = false
var UseOLEDB = true
var AdoConnection = "Provider=Microsoft.Jet.OLEDB.4.0...
...
var AdoConnection = "DSN=YOUR_DSN;UID=Admin;PWD=;"
```

- Select the date format (comment the undesired code line):

```
var DateFormat = 1 // day, month, year
var DateFormat = 2 // month, day, year
```

- Select the date separator (comment the undesired code line):

```
var DateSeparator = "." // 01.01.2002
var DateSeparator = "/" // 01/01/2002
```

- `var WebMaster = "info@yourdomain.com"`

Replace "info@yourdomain.com" with the web master e-mail address.

Only set this parameter if the *send\_mail.asp* page is used.

- `var MaxFileSize2Upload = 200000`

This is the maximum dimension, expressed in bytes, that a file can reach that is to be uploaded on the site using the *upload* functionality.

## 2.2 File style.css

All the styles used on the site must be set in the style.css file, this way they can be displayed and used in the HTML type content management module.

# Access to the admin folder

The *admin* folder contains all the pages used for site administration. You must know the user name and password to access the management pages.

The administration folder address is: *http://www.yourdomain.com/admin*.

eQuercus is supplied with the following preset users:

- ***administrator***, associated with the Administrator group, with the password ***admin***
- ***user***, associated with the Editor group, with the password ***user***

## ***Important***

The first time you access eQuercus it is highly recommended that you change the *administrator* and *user* passwords (Settings ? User management page).

# Minimum requirements

This chapter describes the minimum web server and client requirements for executing eQuercus. These requirements are only valid for site management. There are no special user requirements for displaying the site.

## 4.1 Server

- Microsoft Windows NT 4.0 or higher operating system.
- Microsoft Internet Information Server (IIS) 4.0 or higher.
- Possibility to execute script ASP.
- Microsoft Script Engine version 5.0 or higher.
- Microsoft Data Access Components (MDAC) 2.5 or higher.
- Write permission in the folder containing the images (/images) for executing upload via the eQuercus pages.

### *Note*

No component has to be installed (100% script).

## 4.2 Management client

It is not necessary to install any programs on your computer to manage the site and contents, you can use the Internet browser. eQuercus compatible browsers are:

- Microsoft Internet Explorer 5.0 or higher.
- Netscape 6.0 or higher.

To manage HTML type contents (editor HTML WYSIWYG) it is indispensable to use a client with a Microsoft Windows (95/98/NT4/ME/2000/XP) operating system and Microsoft Internet Explorer 5.5 or higher.



# How to add a new content type

This chapter explains how to add a new content type to eQuercus.

eQuercus can be used to manage various content types. The product is supplied with two content types:

- **Text Document:** contains the title and subtitle fields, two images, a link with related description and a text box for inserting the content body.
- **HTML Document:** contains the title fields and a WYSIWYG (What You See Is What You Get) for editing the content in HTML format.

For example the method for adding a content type for managing the products will be explained.

## 5.1 Database

The following operations need to be executed in the eQuercus.mdb database:

- create a new table containing the fields of the new content;
- create relations between the existing tables and the new table;
- add a record in the *Content\_Type* table.

### 5.1.1 Creating a new table

For eQuercus to operate correctly the new table **must** contain the following fields:

- *content\_id*: counter type primary key;
- *topic\_id*: numeric type long integer;
- *language\_id*: numeric type long integer;
- *list\_id*: numeric type long integer;
- *creation\_date*: date/time type;
- *modification\_date*: date/time type;
- *preview*: byte type;
- *user\_name*: 255 character text type;
- *title*: 255 character text type.

The table must be completed by adding all the fields necessary for memorizing the information related to the new content.

In our example we will add the following fields: *name*, *description*, *short\_description*, *price* and *picture\_file\_name*, in order to obtain the following table *Content\_Product*:

Content_Product
<b>content_id</b>
topic_id
language_id
list_id
creation_date
modification_date
preview
user_name
title
description
price
picture_file_name

For better *performance* it is advisable to index the following fields:

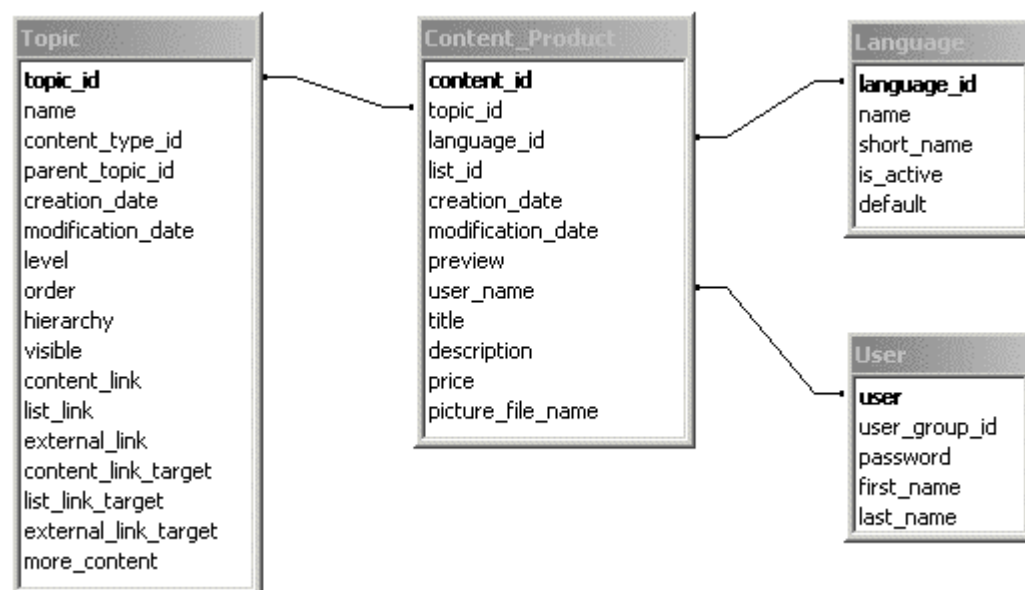
- *content\_id*: duplicates not allowed;
- *topic\_id*: duplicates allowed;
- *language\_id*: duplicates allowed;
- *list\_id*: duplicates allowed.

### 5.1.2 Creating new relations

The second step involves creating relations between the tables just created and existing ones.

The following relations must be created:

- “one to many” between the *topic\_id* field of the *Topic* table and the *topic\_id* field of the new table;
- “one to many” between the *language\_id* field of the *Language* table and the *language\_id* field of the new table;
- “one to many” between the *user* field of the *User* table and the *user\_name* field of the new table.



### 5.1.3 Editing the Content\_Type

The *Content\_Type* table contains information regarding the content types managed by eQuercus. In this table we will add a record with the following information:

- *content\_type\_id*: the next available integer (primary key);
- *description*: description of the content type. This text will appear on the management pages;
- *order*: specifies the order for displaying the content type in the dropdown list in the management pages;
- *admin\_file\_name*: name of the ASP for managing the new content type (see the chapter “Adding new ASP pages for managing content”);
- *table\_name*: name of the table containing the new content data.

We will enter the following record in the *Content\_Type* table:

- *content\_type\_id*: 3;
- *description*: Product sheet;
- *order*: 3;
- *admin\_file\_name*: admin\_product\_content.asp;
- *table\_name*: Content\_Product.

## 5.2 Adding new ASP pages for managing content

Contents are managed by ASP pages. Three different pages must exist for each content type:

- page for displaying and editing content data;
- page for entering and updating operations for database data;
- page for operations related to data display preview.

The name of the page for displaying and editing content data corresponds to the text entered in the *admin\_file\_name* field in the *Content\_Type* table.

Three example files are supplied with the product that you can use to create your new content type. These files are in the *Template* folder of the eQuercus.zip file and are listed below:

- *admin\_TEMPLATE\_content.asp*: page for displaying and editing content data;
- *execute\_insert\_TEMPLATE\_content.asp*: page for entering and updating database data;
- *execute\_preview\_TEMPLATE\_content.asp*: page for operations related to data display preview.

The files describe the operations to be executed for creating a new content type.  
The Demo version does not contain these files.

## 5.3 Adding and editing files for eQuercus Library

To display new content types the following changes need to be made to the *library* folder.

### 5.3.1 Creating a new file containing the object related to the new content type

In order for the your site ASP pages to be able to read the new content type data it is necessary to create a new object. This object, with its related methods, is entered in a new file in the *library* folder.

As an example, use the *contentText.inc* file in the *library* folder.

It is necessary to change the number present in the name of the functions in order to avoid conflicts. The *contentText* object uses the number *000* while the *contentHTML* object uses the number *001*. Your new object should use a different value.

### 5.3.2 Editing the equercus.inc file

Edit the equercus.inc file as follows:

- Include the file containing the new object in the `<%// Objects%>` section.
- Add the necessary code in the `switch (type){}` block in the `GetContent` and `GetListOfContents` functions.

Example:

```
case 2:
    strDbTableName   = "Content_Product";
    strContentClass  = "ContentProduct";
    break;
```

## 5.4 Display page association

The pages of your site used for displaying new content types must be associated to the new type within eQuercus. See the information in the “User Manual” in the “Configurations – Associate the site pages to content types” chapter.